

Using Research
to Generate
Awareness and
Resources for
Sustainable
Student Travel



PARIS 2023
76TH ANNUAL CONFERENCE

Your Presenters



Amanda Roshan-Rawaan

Indiana University,
Education Abroad



Anneloes Slappendel-Henschen

Nuffic



Daan Bormans

Nuffic

Our Goal Today



Who's Here Today

Scan the QR or use link to contribute



<https://forms.office.com/r/qRnWrwlEmY?origin=IprLink>

How did we even get here?

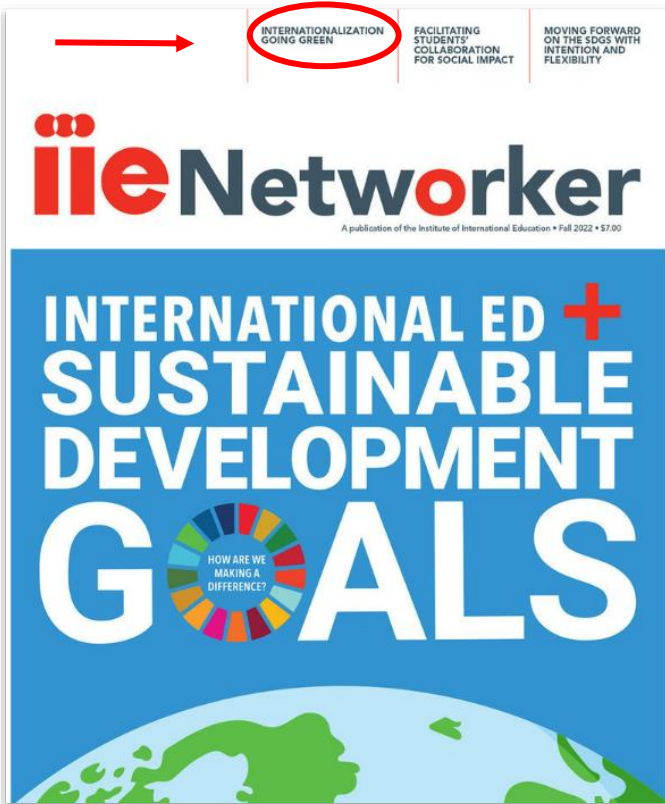


Why don't the students
just stay in their host
city!?

...they traveled to *how
many* countries?

...study abroad students
will be the death of our
planet.

How did we even get here? (aka “how we met”)



Wow! It doesn't have to be like this!

Maybe I should look into this with my own students...

Gulp...maybe Nuffic would present with me at CIEE???



Nuffic's Research

- Current and urgent theme
- Intercultural competences vs carbon footprint
- Limited research



Train or plane?

A study of options and opportunities for sustainable internationalisation

Lynette Peeters
Anneloes Slappendel-Henschen

July 2022

nuffic
meet the world

Research question

How can higher education institutions encourage students to make their international experience more sustainable?

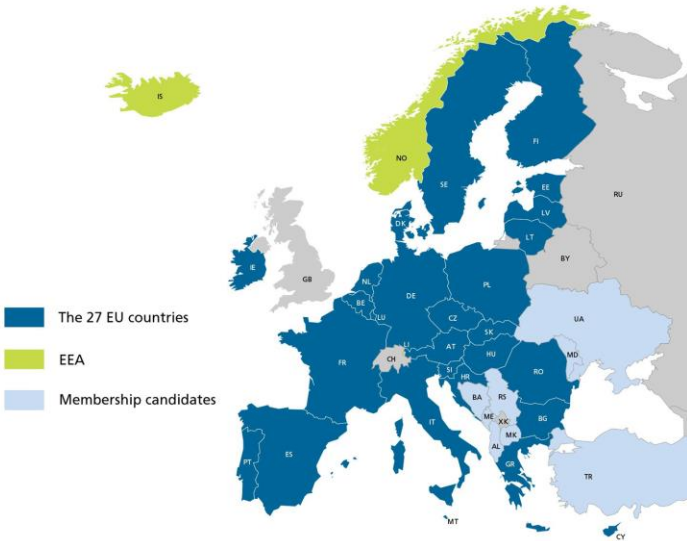
Methodology

- Dutch higher education students
- Small sample (N = 109)
- Study vs internship
- Spain, Germany and Sweden

Methodology

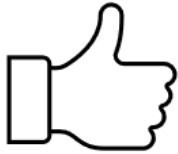
Dutch higher education students
Erasmus+ programme

25% outbound mobility

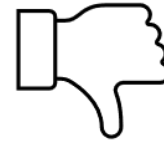


Results

Importance of sustainability while designing a international experience



39%



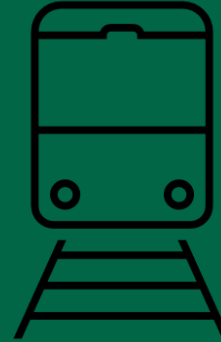
44%

Results



71%

1. Speed of travel
2. Ease of planning



14%

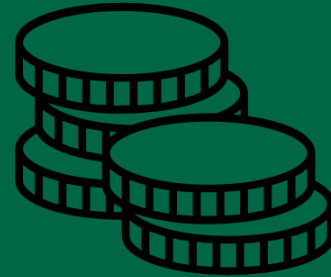
1. Sustainability
2. Most comfortable

Results



“I wasn’t given any information on how to travel more sustainably, and it wasn’t pointed out as something to think about. Being so pre-occupied with preparing in other ways and thinking about what it would be like when I got there, the question of sustainability didn’t even occur to me.”

Keep The Conversation Going



Results



Internationalisation can create awareness

“When I actually got to Sweden, I noticed how people there were engaged with the issue. This did influence my semester abroad.”



Indiana University's Research

- What are students' travel behaviors?
- What can we do to help students travel more sustainably?

Methodology

- Large, public institution (lots of out-of-state students)
- 1578 students emailed via Salesforce
 - 206 opened in the first few hours
 - Small sample (n=63)
 - 66% went to Europe
 - Nearly all had traveled abroad before
- 25 Questions (Qualtrics)



Share your thoughts:
Sustainable Travel Survey

Education Abroad wants to hear from you!

Welcome back, Education Abroad alumni! You are receiving this message because at some point in the last year you participated in an educational experience outside the United States with the Office of Overseas Study, now called IU Education Abroad.

In addition to having a big impact on your education and life, international travel can have an impact on the environment. As a part of our commitment to sustainable global experiences, we want to understand what current students know about sustainable travel resources.

- This is the first time we have sent a sustainable travel survey, so we **need your input!**
- The survey should take under 15 minutes
- It will ask questions about your awareness of sustainable travel resources before you went abroad, as well as your experiences abroad

Results: Motivations

For students who think that sustainable travel is important...



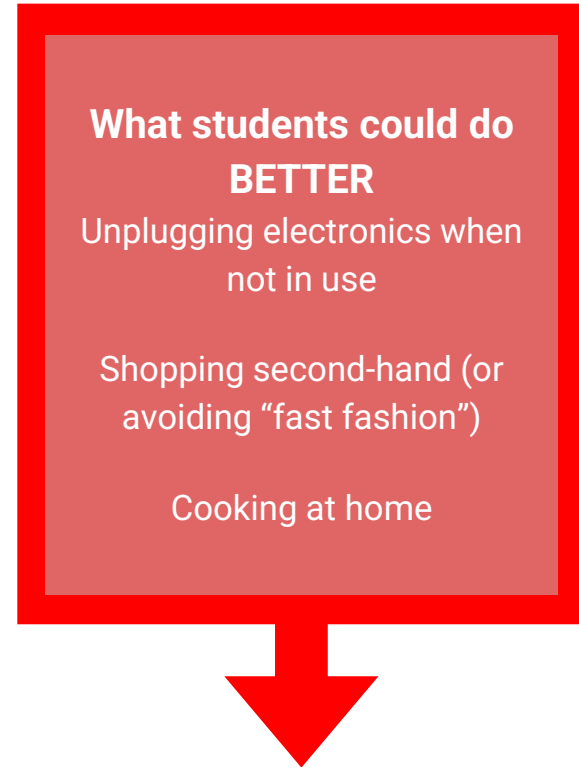
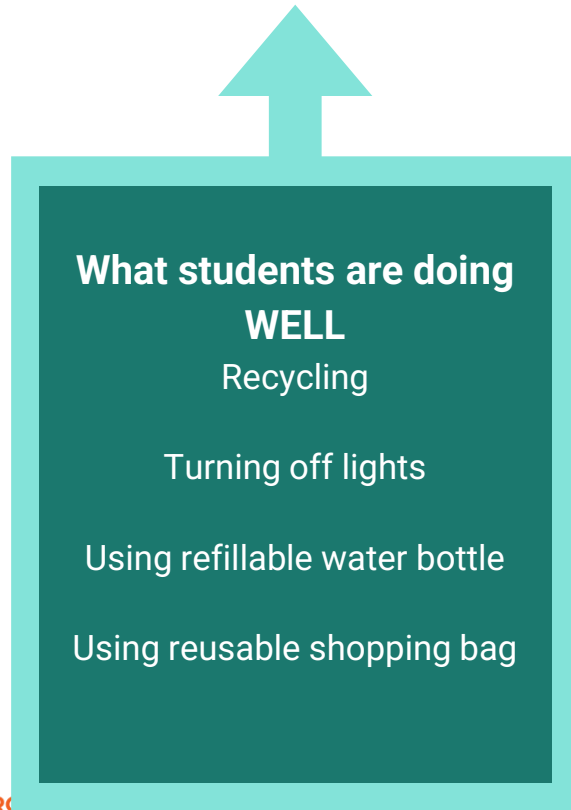
+ F.R.I.E.N.D.S +



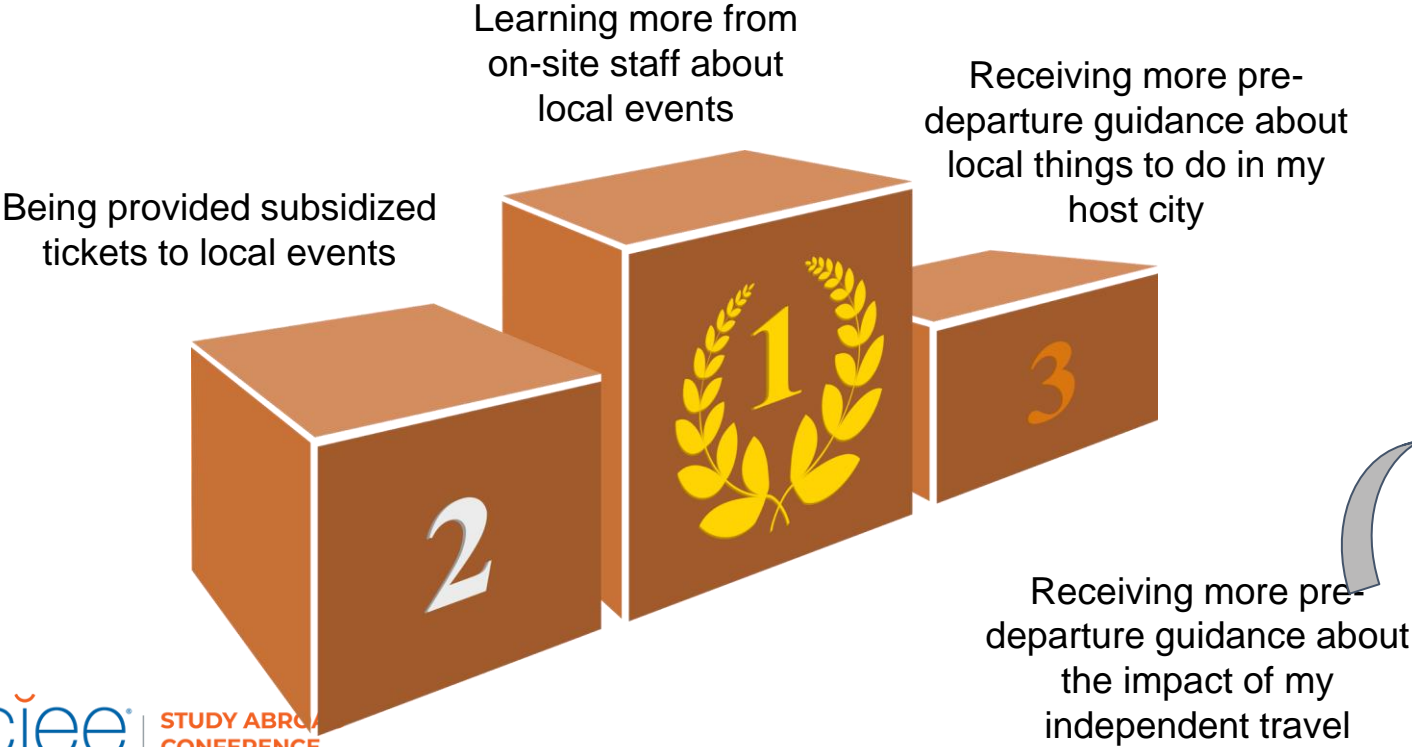
=

TRAVEL

Results: Behaviors



Results: What can we do?



Discuss: Provocative Statements

Institutions should only fund experiences abroad when using a sustainable mode of travel (non-US: institutions should only provide funding for mobility within the EEA)

Institutions (or providers) should offer scholarships when students book direct air travel (no connections) to arrive to the program site.

Institutions (or providers) should provide a pre-paid travel card for use in the host country/city ONLY, to encourage students to “stay local”.

Institutions (or providers) should require a “sustainability plan” as part of the application (student’s app or faculty-led program proposal).

Study abroad providers/organizations should donate a portion of their revenue to a sustainability-focused organization or initiative.

Institutions (or providers) should cover the cost-differences between airfare and railway travel.

Students should be obligated to follow a sustainability pre-departure program before traveling.

Only students on mobility programs longer than 6 months are allowed to fly to their destination.

Provocative Statements

In your group, discuss:

1. **What would it take** to make this statement a reality? (e.g. resources, advocacy)
2. What are some anticipated “push back” comments from the **nay-sayers**?
3. How do you think your **students** would respond to this strategy?
4. If anyone *is* doing this, what **resources or guidance** do you have for colleagues?

Share your feedback via Forms

Use the QR code at your table to post your thoughts

Be prepared to share ONE of the discussion points
(but NOT all #1!)

Discuss: Provocative Statements (again)

Institutions should only fund experiences abroad when using a sustainable mode of travel (non-US: institutions should only provide funding for mobility within the EEA)

Institutions (or providers) should offer scholarships when students book direct air travel (no connections) to arrive to the program site.

Institutions (or providers) should provide a pre-paid travel card for use in the host country/city ONLY, to encourage students to “stay local”.

Institutions (or providers) should require a “sustainability plan” as part of the application (student’s app or faculty-led program proposal).

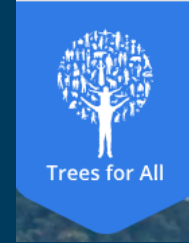
Study abroad providers/organizations should donate a portion of their revenue to a sustainability-focused organization or initiative.

Institutions (or providers) should cover the cost-differences between airfare and railway travel.

Students should be obligated to follow a sustainability pre-departure program before traveling.

Only students on mobility programs longer than 6 months are allowed to fly to their destination.

Take Action Today...keep the conversation going



Email Amanda if you want to see the full list of responses from the groups: amarosha@iu.edu

ciee® | STUDY ABROAD
CONFERENCE



Thank You!

PARIS 2023
76TH ANNUAL CONFERENCE